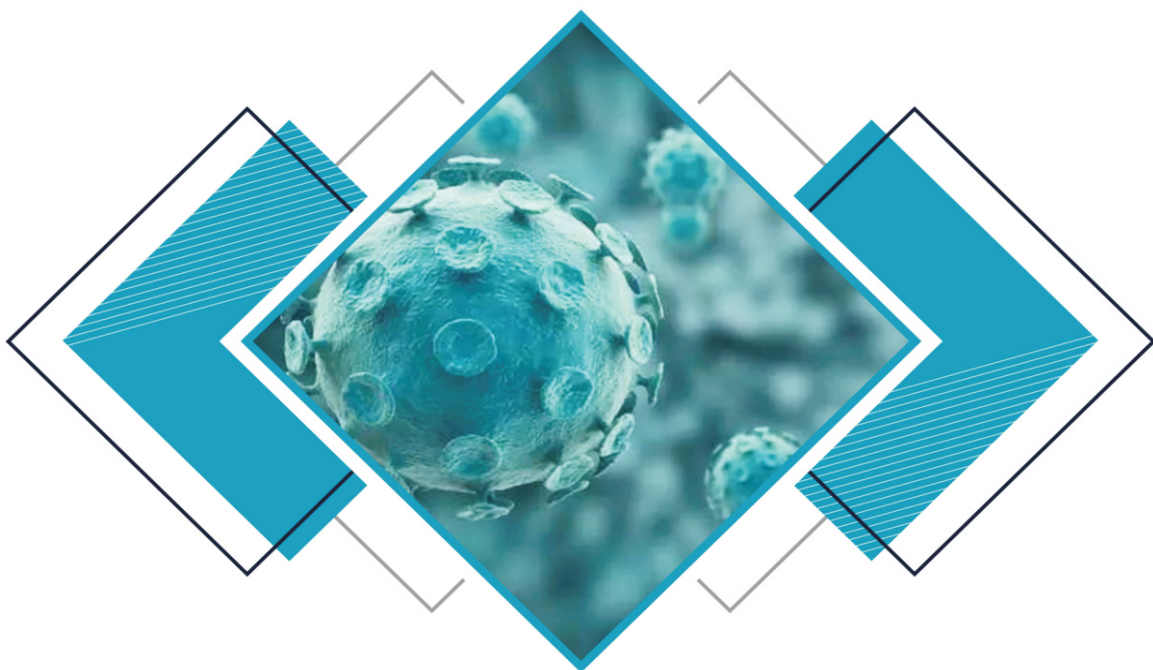


Dietary Fibre Deficiency Syndrome – Immune Dysregulation – Autoimmune Disease

Ravikumar Kurup and Parameswara Achutha Kurup



Dietary Fibre Deficiency Syndrome - Immune Dysregulation - Autoimmune Disease

Ravikumar Kurup

Parameswara Achutha Kurup

ISBN: 978-1-946898-35-7

© 2017 Ravikumar Kurup. Licensee Open Science Publishers.

© 2017 Parameswara Achutha Kurup. Licensee Open Science Publishers.

This work is distributed under the terms of the Creative Commons Attribution License (<http://creativecommons.org/licenses/by/4.0/>), which permits unrestricted use, distribution, and reproduction in any medium, provided the original work is properly cited.



Published in 2017 by Open Science Publishers

228 Park Ave., S#45956, New York, NY 10003, U.S.A.

<http://www.openscienceonline.com>

Contents

Chapter 1	The Dietary Fibre, Species Evolution and Neuro-Immuno-Genomic-Endocrine Integration	1
Chapter 2	Dietary Fibre - Relation to Cholesterol and Actinide Dependent Shadow Biosphere of Archaea and Viroids in Systemic Lupus Erythematosis, Multiple Sclerosis and Rheumatoid Arthritis	7
Chapter 3	Dietary Fibre, Archaeal Endosymbiosis, Fructose Disease and Autoimmune Disease	21
Chapter 4	Dietary Fibre - Relation to Endosymbiotic Actinidic Archaeal Synthesis of Digoxin from Cholesterol Regulates Cellular Function and Contributes to the Pathogenesis of Systemic Lupus Erythematosis, Multiple Sclerosis and Rheumatoid Arthritis	59
Chapter 5	Dietary Fibre - Relation to the Archaeal Induced Stem Cell Conversion Produces an Epidemic Benjamin Buttons Reverse Aging Syndrome leading to Systemic Lupus Erythematosis, Multiple Sclerosis and Rheumatoid Arthritis	69
Chapter 6	Dietary Fibre - Relation to Systemic Lupus Erythematosis, Multiple Sclerosis and Rheumatoid Arthritis - Archaeal Mediated RNA Viroids and Amyloidosis	79
Chapter 7	Dietary Fibre - Relation to Neoneanderthalisation and Human Disease - The Origins of Autoimmunity - Systemic Lupus Erythematosis, Multiple Sclerosis and Rheumatoid Arthritis	87
Chapter 8	Dietary Fibre - Relation to Porphyrins and Quantal Perception - Role of Porphyrins in Environmental Communication/Modulation of Digital Information Storage/Processing System - Low Level of Electromagnetic Fields and Autoimmunity in Systemic Lupus Erythematosis, Multiple Sclerosis and Rheumatoid Arthritis	99

Chapter 9	Dietary Fibre - Relation to Actinidic Archaea Mediates Biological Transmutation in Human Systems - Pathogenesis of Systemic Lupus Erythematosis, Multiple Sclerosis and Rheumatoid Arthritis	125
Chapter 10	Dietary Fibre - Relation to Endosymbiotic Archaeal Generated RNA Viroids can Regulate Cell Function and Contribute to Autoimmunity - Systemic Lupus Erythematosis, Multiple Sclerosis and Rheumatoid Arthritis	133
Chapter 11	Dietary Fibre - Relation to Endosymbiotic Actinidic Archaeal Cholesterol Catabolic Syndrome - Hypocholesterolemia and Autoimmunity - Systemic Lupus Erythematosis, Multiple Sclerosis and Rheumatoid Arthritis	145
Chapter 12	Dietary Fibre - Relation to Endosymbiotic Actinidic Archaeal Mediated Warburg Phenotype Mediates Autoimmunity - Systemic Lupus Erythematosis, Multiple Sclerosis and Rheumatoid Arthritis	155
Chapter 13	Endosymbiotic Actinidic Archaea and Viroidal Induced Warburg Phenotype Can Be Reversed by a Modified Vegetarian High Fibre, High Medium Chain Triglyceride Ketogenic Diet	163
Chapter 14	Endosymbiotic Pathogenic Archaea and Archaeal Derived RNA Viroids Induced Evolutionary Species Change in Humans - Interconversion of Homo Sapiens and Homo Neanderthalis - Method for Archaeal Symbiosis modulated Human Evolution for Therapeutic Purpose	175