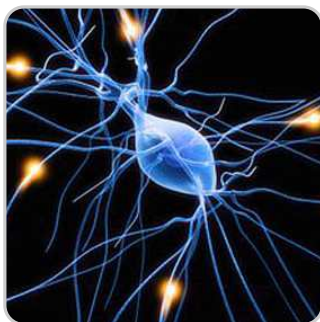
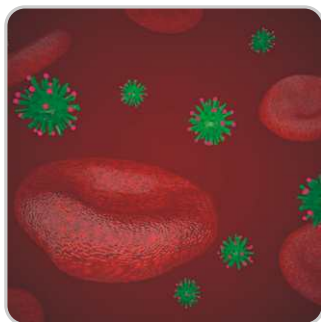
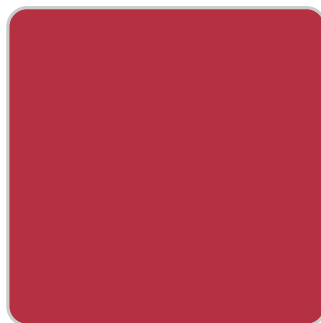
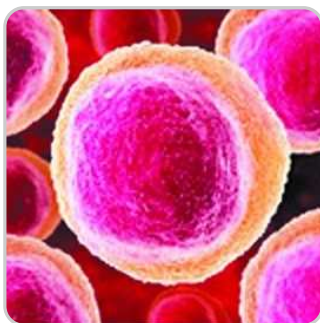
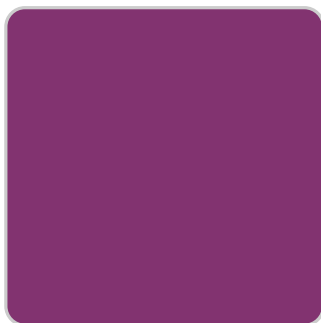


The Ontogeny of Autoimmunity

Systemic Lupus Erythematosus, Multiple Sclerosis and
Rheumatoid Arthritis - Human Atavistic Archaeal
Colonies with Neanderthal Metabolonomics

Ravikumar Kurup and Parameswara Achutha Kurup



The Ontogeny of Autoimmunity

*– Systemic Lupus Erythematosus, Multiple Sclerosis
and Rheumatoid Arthritis – Human Atavistic
Archaeal Colonies with Neanderthal Metabolonomics*

Ravikumar Kurup

Parameswara Achutha Kurup

First published 2015

by Open Science Publishers

228 Park Ave., S#45956, New York, NY 10003, U.S.A.

ISBN: 978-1-941926-32-1

Copyright © 2015 Ravikumar Kurup

Copyright © 2015 Parameswara Achutha Kurup

All rights reserved. No part of this book may be reprinted or reproduced or utilized in any form or by any electronic, mechanical, or other means, now known or hereafter invented, including photocopying and recording, or in any information storage or retrieval system, without permission in writing from the publishers.

Cover design: Anne Harris, Syracuse

Layout: Carrie Lee, Buffalo

Printed in the United States of America.

First Edition

Trademark notice: Product or corporate names may be trademarks or registered trademarks, and are used only for identification and explanation without intent to infringe.

A PDF version of this book is available for free in Open Science at www.openscienceonline.com. This work is licensed under the Creative Commons Attribution-NonCommercial 3.0 Unported License. To view a copy of this license, visit <http://creativecommons.org/licenses/by-nc/3.0/>

Contents

1	A Cholesterol and Actinide Dependent Shadow Biosphere of Archaea and Viroids in Systemic Lupus Erythematosis, Multiple Sclerosis and Rheumatoid Arthritis	5
2	Endosymbiotic Actinidic Archaeal Synthesis of Digoxin from Cholesterol Regulates Cellular Function and Contributes to the Pathogenesis of Systemic Lupus Erythematosis, Multiple Sclerosis and Rheumatoid Arthritis.....	17
3	The Archaeal Induced Stem Cell Conversion Produces an Epidemic Benjamin Buttons Reverse Aging Syndrome Leading to Systemic Lupus Erythematosis, Multiple Sclerosis and Rheumatoid Arthritis.....	27
4	Systemic Lupus Erythematosis, Multiple Sclerosis and Rheumatoid Arthritis – Relation to Archaeal Mediated RNA Viroids and Amyloidosis	37
5	Neo-Neanderthalisation and Human Disease – The Origins of Autoimmunity – Systemic Lupus Erythematosis, Multiple Sclerosis and Rheumatoid Arthritis	45
6	Porphyryns and Quantal Perception – Role of Porphyryns in Environmental Communication/Modulation of Digital Information Storage/Processing System – Low Level of Electromagnetic Fields and Autoimmunity in Systemic Lupus Erythematosis, Multiple Sclerosis and Rheumatoid Arthritis.....	57

7	Actinidic Archaea Mediates Biological Transmutation in Human Systems – Relation to the Pathogenesis of Systemic Lupus Erythematosis, Multiple Sclerosis and Rheumatoid Arthritis	81
8	Endosymbiotic Archaeal Generated RNA Viroids Can Regulate Cell Function and Contribute to Autoimmunity – Systemic Lupus Erythematosis, Multiple Sclerosis and Rheumatoid Arthritis.....	89
9	Endosymbiotic Actinidic Archaeal Cholesterol Catabolic Syndrome – Hypocholesterolemia and Autoimmunity – Systemic Lupus Erythematosis, Multiple Sclerosis and Rheumatoid Arthritis.....	101
10	Endosymbiotic Actinidic Archaeal Mediated Warburg Phenotype Mediates Autoimmunity – Systemic Lupus Erythematosis, Multiple Sclerosis and Rheumatoid Arthritis	111
11	Archaeal Porphyrins, Regulation of Cell Function and Neuro-Immuno-Endocrine Integration – Role in Pathogenesis of Systemic Lupus Erythematosis, Multiple Sclerosis and Rheumatoid Arthritis.....	119